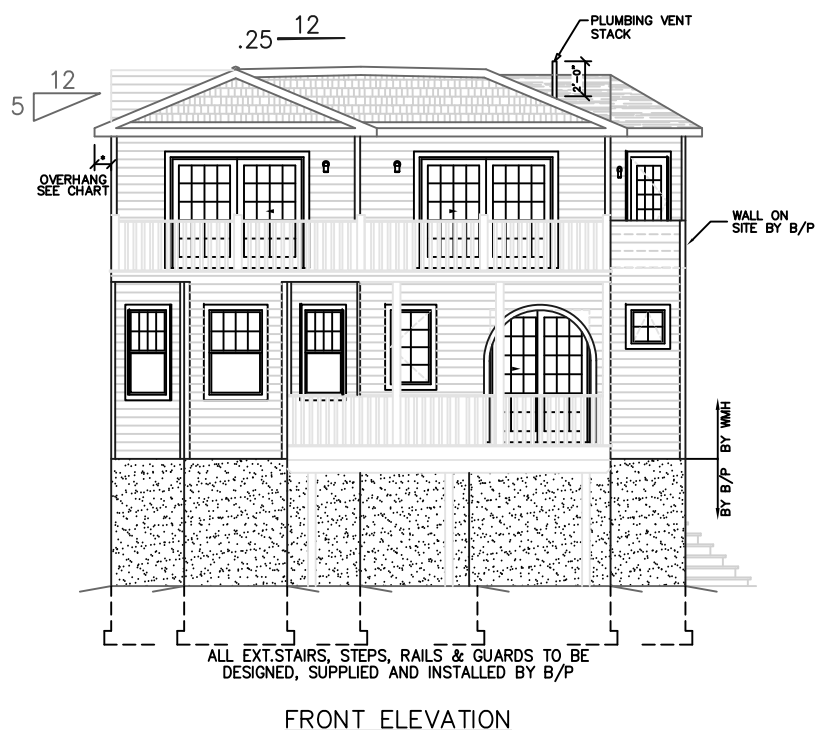
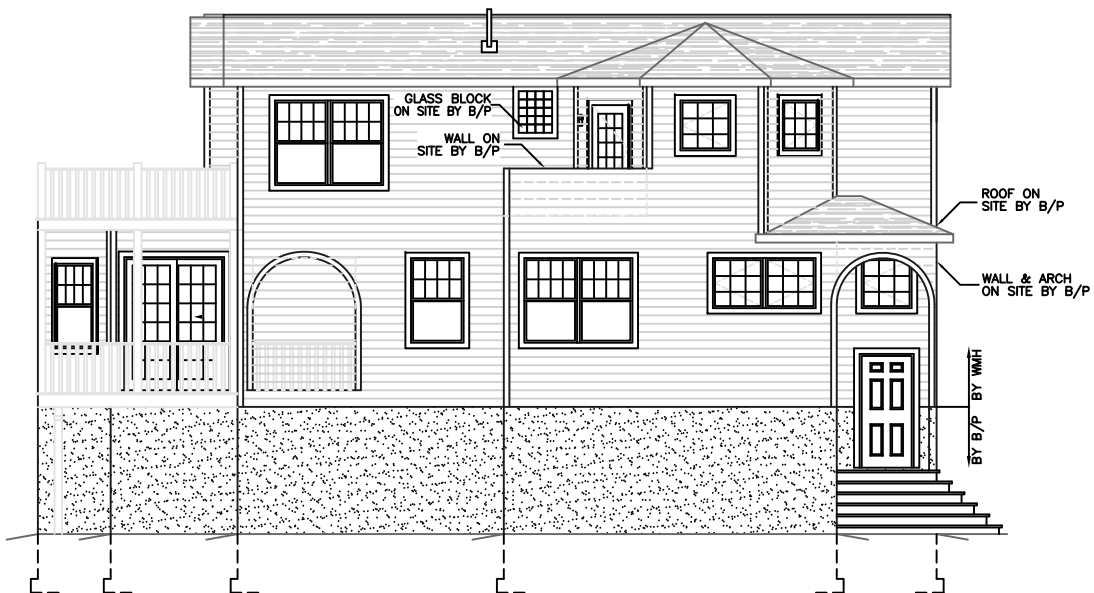


OVERHANG DIMENSION (*)			
ROOF PITCH	HOUSE WIDTH		
	24'-0"	26'-0"/30'-0"	27'-8"/31'-8"
5/12	16"	11"	16"
7/12	16"	11"	16"
9/12	12"	11"	12"
12/12	8 3/4"	8 3/4"	8 3/4"



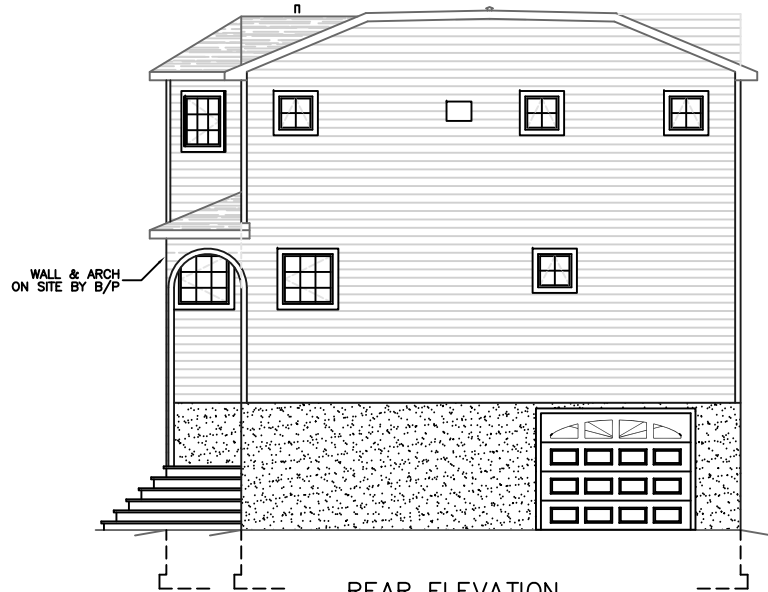
FRONT ELEVATION



RIGHT ELEVATION



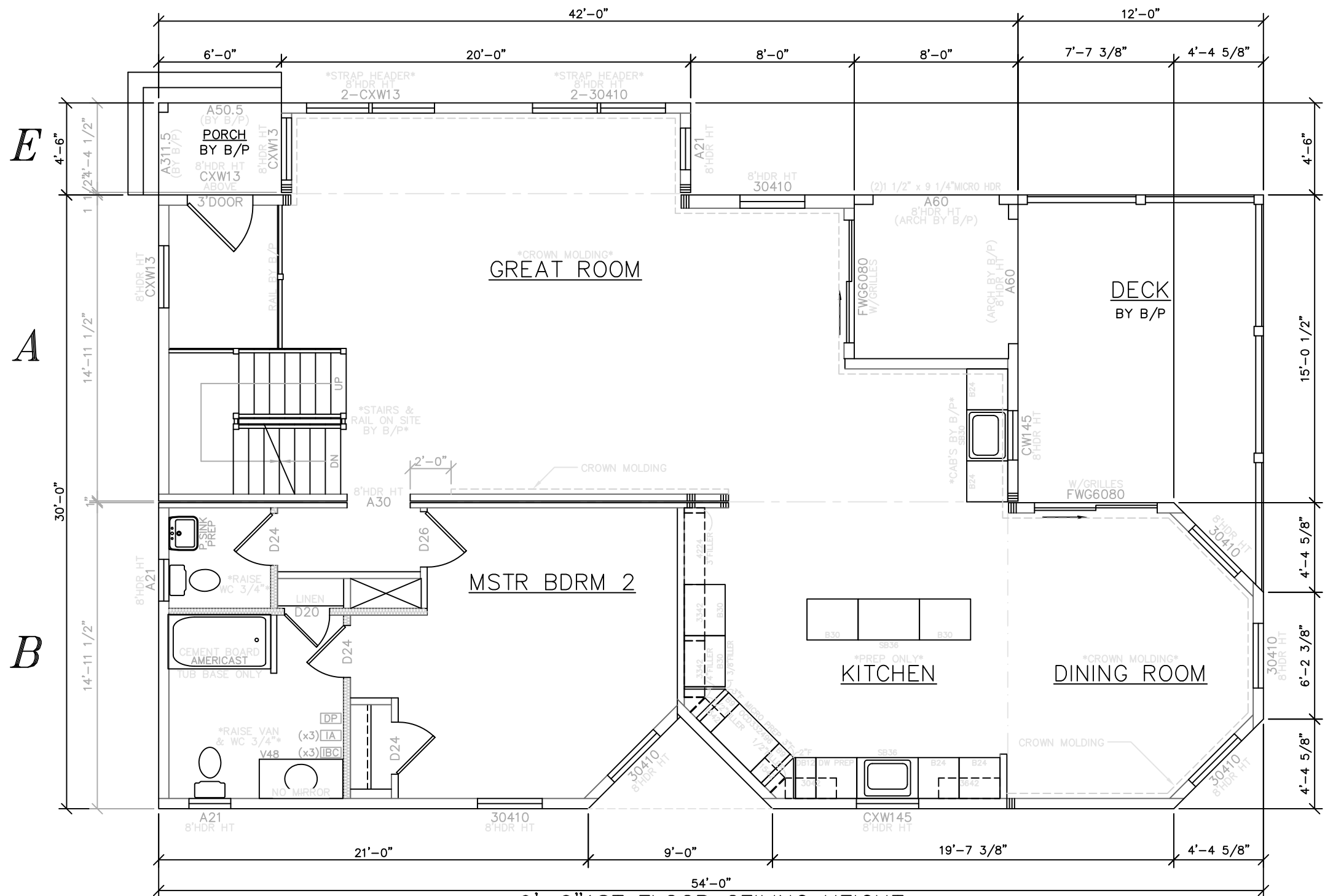
LEFT ELEVATION



REAR ELEVATION

SEE STANDARD NOTES & DETAILS DWG #8

USE GROUP: R5	BUILDER: HOMEOWNER:	SERIAL No. 11157	THIRD PARTY INSPECTION AGENCY
CONST. TYPE: VB		PRODUCTION No. 5909	PE / RA
DESIGNER: V. GIORGIO		REVISION	
DATE: 01/04/12		DATE	
SCALE: 1/8" = 1'-0"		CHECK	
PAGE: 1		V. GIORGIO	10/12/07
<p>COLONIAL CTM-R ELEVATIONS</p> <p>Westchester Modular Homes Inc 30 Reagans Mill Road, Wingdale, New York, 12594 Tel (845)832-9400 Fax (845)832-6698</p>			



9'-0" 1ST FLOOR CEILING HEIGHT
 ANDERSEN STORMWATCH WINDOWS W/ GRILLES IN TOP SASH ONLY
 SOLID SMOOTH CHEYENNE DOORS
 UPGRADE BASE RAISED 3/4" & TACKED & WINDSOR CASING

1,422 S.F.
 1st. FLR.

ALL WINDOWS & DOORS
 NEW JERSEY FLASHING

NOTE:
 ALL WINDOWS WITH A SILL HEIGHT LESS THAN 24"
 ABOVE FINISHED FLOOR AND WITH A EXT. HEIGHT OF
 GREATER THAN 6'-0" TO GRADE SHALL BE EQUIPPED
 WITH FALL PROTECTION SUPPLIED AND INSTALLED BY
 B/P ON SITE IN ACCORDANCE W/ R612.3

* DESIGNED TO THE FOLLOWING:
 -2009 INTERNATIONAL RESIDENTIAL CODE,
 NJ AMENDMENTS
 -2009 NAPHCC NATIONAL STANDARD
 PLUMBING CODE, NJ AMENDMENTS
 -2008 NATIONAL ELECTRICAL CODE, NJ
 AMENDMENTS
 -2009 INTERNATIONAL ENERGY
 CONSERVATION CODE, NJ AMENDMENTS

FRONT

SEE STANDARD NOTES & DETAILS DWG #8

USE GROUP: R5	BUILDER: COLONIAL CTM-R	HOMEOWNER:	SERIAL No. 11157	THIRD PARTY INSPECTION AGENCY
CONST. TYPE: VB	DESIGNER: V. GIORGIO	DATE: 01/04/12	PRODUCTION No. 5909	PE / RA
SCALE: 1/4" = 1'-0"	PAGE:	REVISION	DATE	
	CHECK	DATE		

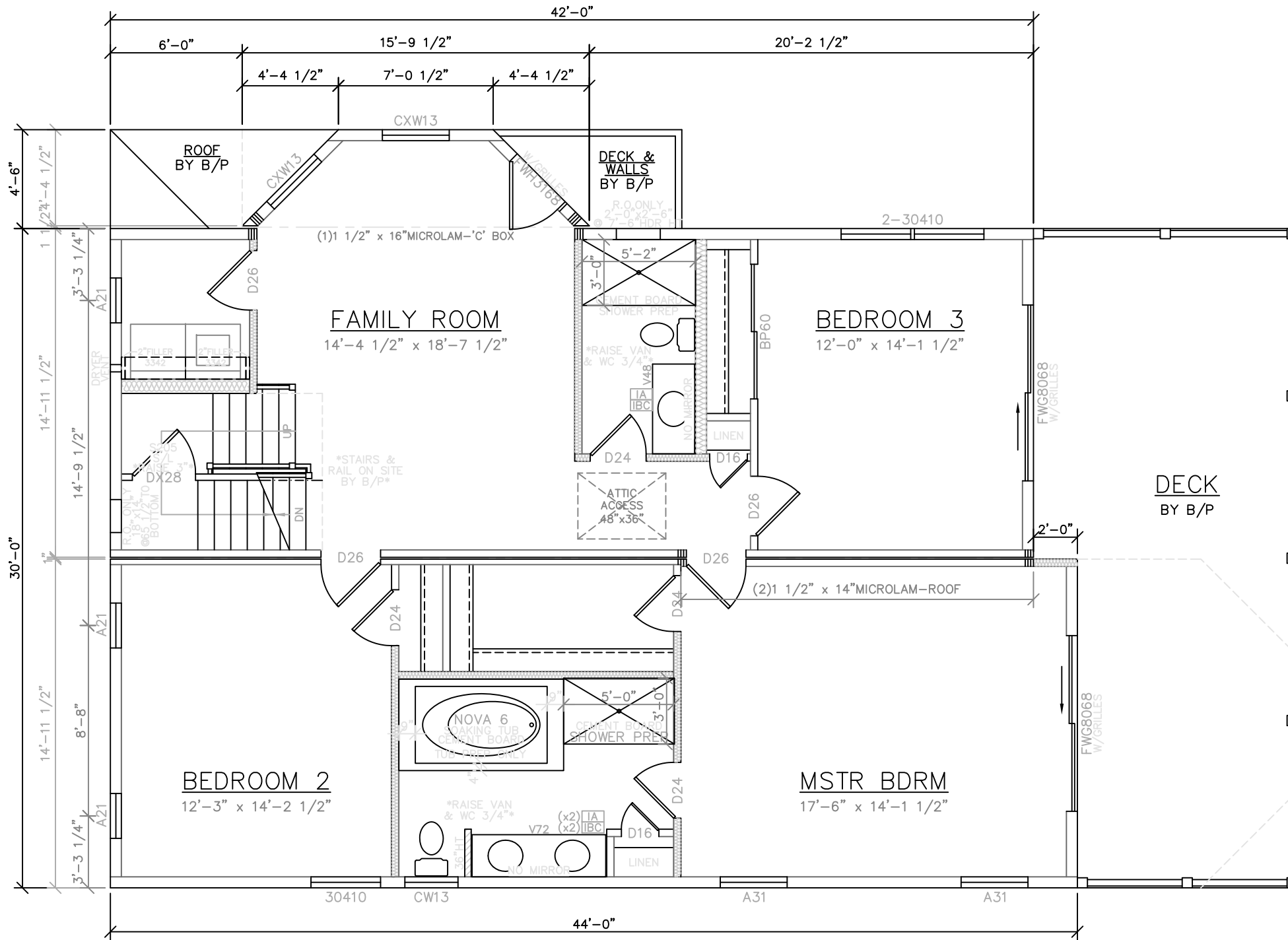
Westchester Modular Homes Inc
 30 Reagans Mill Road, Wingdale, New York, 12594
 Tel (845)832-9400 Fax (845)832-6698



F

C

D



ANDERSEN STORMWATCH WINDOWS W/ GRILLES IN TOP SASH ONLY

SOLID SMOOTH CHEYENNE DOORS
UPGRADE BASE RAISED 3/4" & TACKED & WINDSOR CASING

1,342 S.F.
2nd. FLR.

ALL WINDOWS & DOORS
NEW JERSEY FLASHING

FRONT

LIGHT & VENTILATION SCHEDULE (SF)			
ROOM	AREA	LIGHT SUPPLIED	VENT SUPPLIED
FAMILY ROOM	268	24.6	29.53
MSTR BDRM	247	42.9	23.60
BEDROOM 2	174	16.4	7.80
BEDROOM 3	170	56.7	33.40

* DESIGNED TO THE FOLLOWING:
 -2009 INTERNATIONAL RESIDENTIAL CODE, NJ AMENDMENTS
 -2009 NAPHCC NATIONAL STANDARD PLUMBING CODE, NJ AMENDMENTS
 -2008 NATIONAL ELECTRICAL CODE, NJ AMENDMENTS
 -2009 INTERNATIONAL ENERGY CONSERVATION CODE, NJ AMENDMENTS

SEE STANDARD NOTES & DETAILS DWG #8

USE GROUP: R5	BUILDER: HOMEOWNER:	SERIAL No. 11157	THIRD PARTY INSPECTION AGENCY
CONST. TYPE: VB		PRODUCTION No. 5909	PE / RA
DESIGNER: V.GIORGIO		REVISION	
DATE: 01/04/12		DATE	
SCALE: 1/4" = 1'-0"		CHECK	
PAGE: 3B			

COLONIAL CTM-R
SECOND FLOOR PLAN

Westchester Modular Homes Inc
 30 Reagans Mill Road, Wingdale, New York, 12594
 Tel (845)832-9400 Fax (845)832-6698