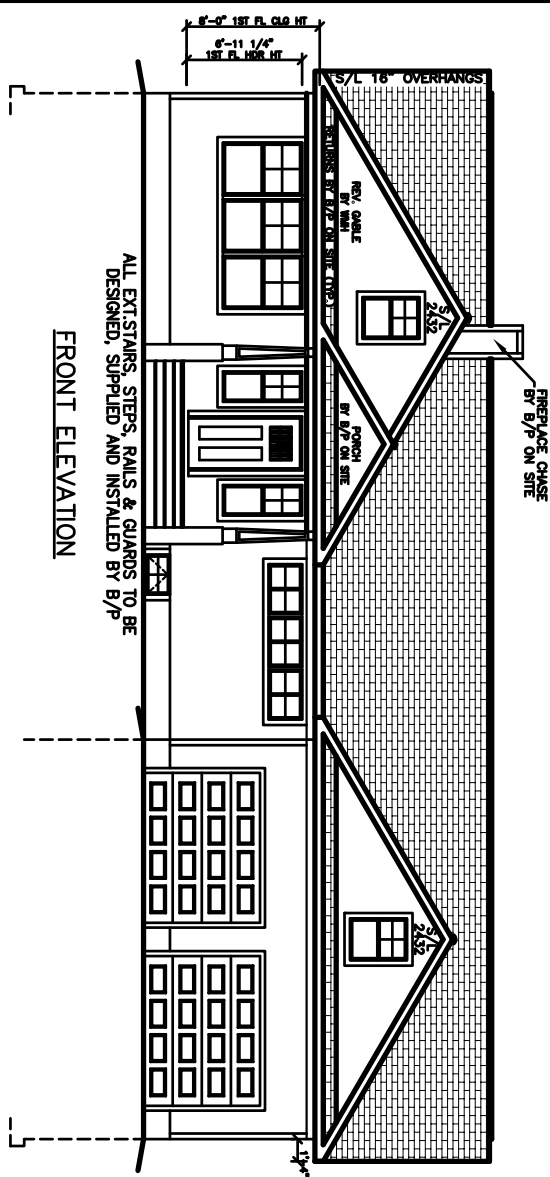
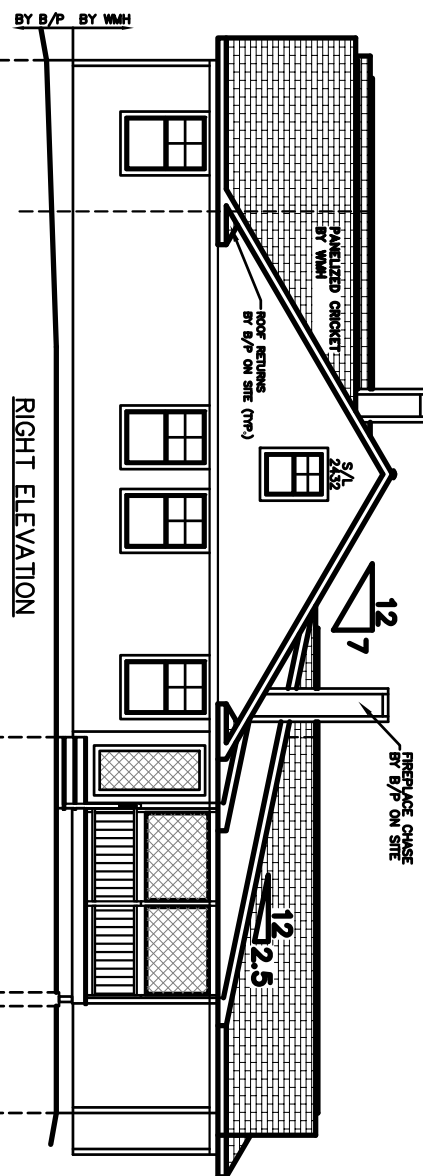


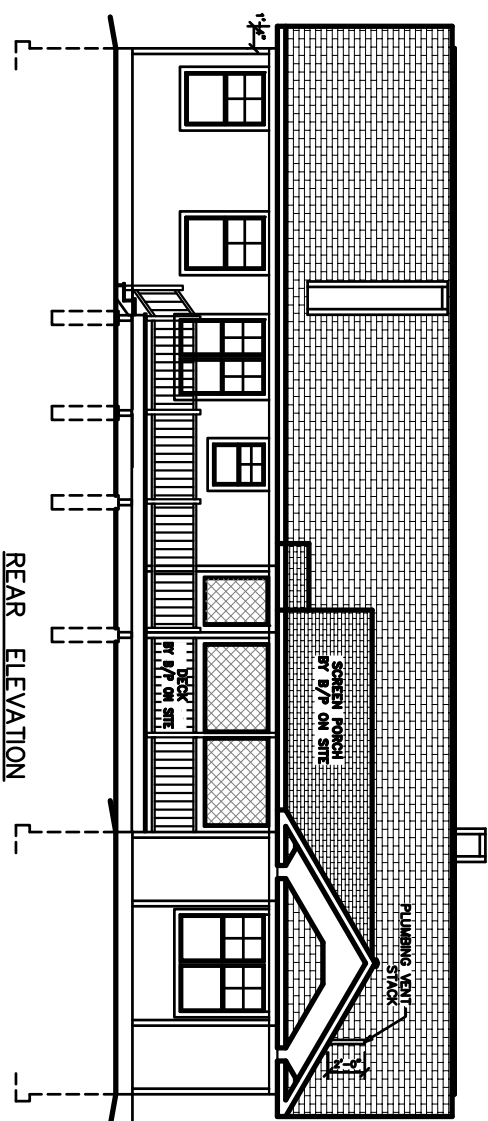
LEFT ELEVATION




FRONT ELEVATION

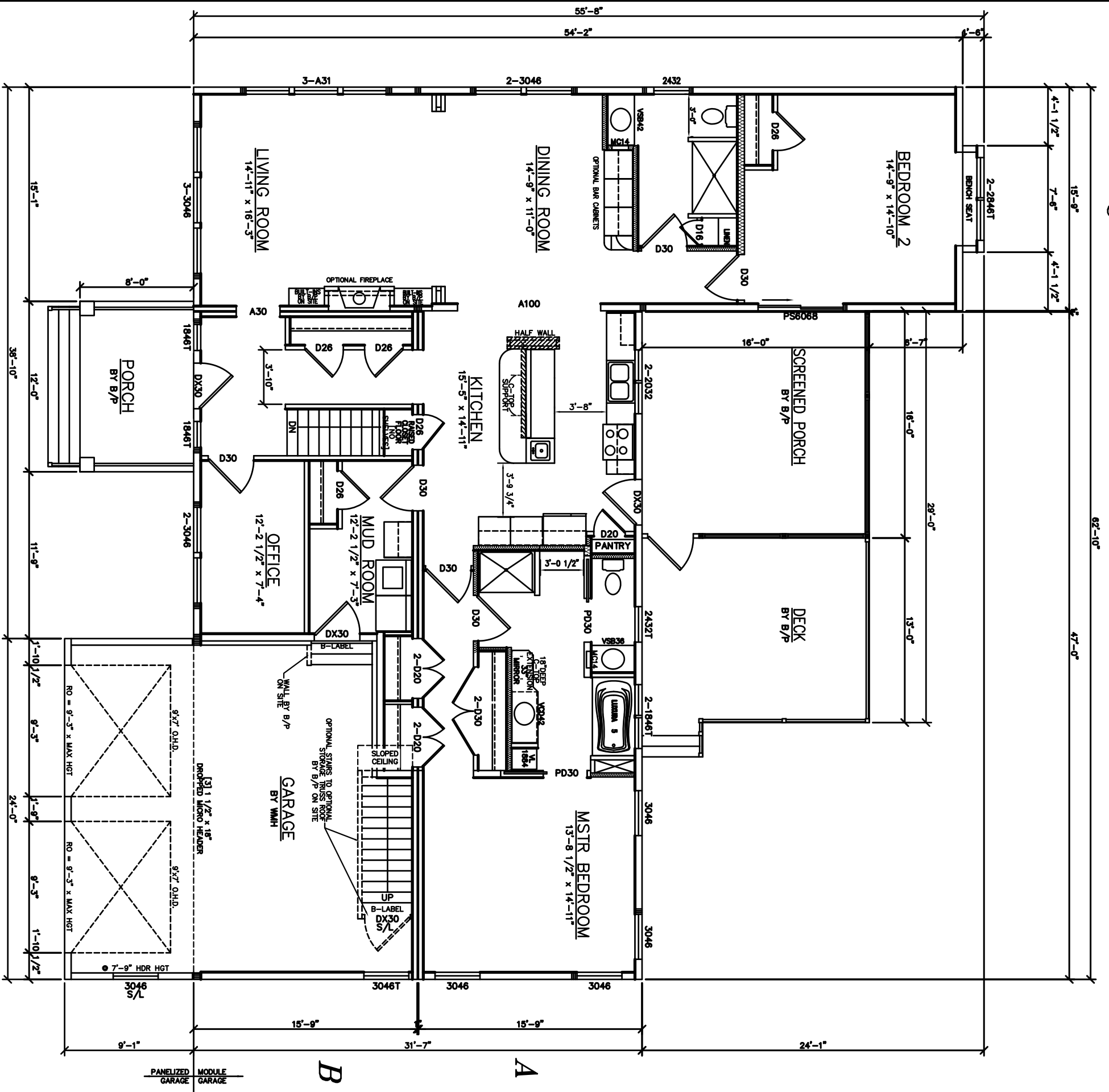


RIGHT ELEVATION



REAR ELEVATION

USE GROUP: R5	BUILDER:	HOMEOWNER:	SERIAL No. 11008	PE / RA	THIRD PARTY INSPECTION AGENCY
CONST. TYPE: VB		SITE:	PRODUCTION No. 5779		
DESIGNER: P.McHUGH	RANCH CTM-L		REVISION	DATE	
DATE: 2/9/11			P.McHUGH	2/25/11	
SCALE: 1/8" = 1'-0"	ELEVATIONS		P.McHUGH	3/24/11	
PAGE: 1					
	 Westchester Modular Homes Inc 30 Reagans Mill Road, Wingdale, New York, 12594 Tel (845)832-9400 Fax (845)832-6698		CHECK	DATE	
			V.GIORGIO	10/12/07	



2026 S.F.
1st. FLR.

SEE STANDARD NOTES & DETAILS DWG #8

USE GROUP: R5	BUILDER:	HOMEOWNER:	SERIAL No. 11008	PE / RA	THIRD PARTY INSPECTION AGENCY
CONST. TYPE: VB		SITE:	PRODUCTION No. 5779		
DESIGNER: P. McHUGH	RANCH CTM-L FIRST FLOOR PLAN			REVISION	DATE
DATE: 2/29/11				P. McHUGH	2/25/11
SCALE: 3/16" = 1'-0"				P. McHUGH	3/24/11
PAGE: 3A	Westchester Modular Homes Inc 30 Reagans Mill Road, Wingdale, New York, 12594 Tel (845)832-9400 Fax (845)832-6698			CHECK	DATE