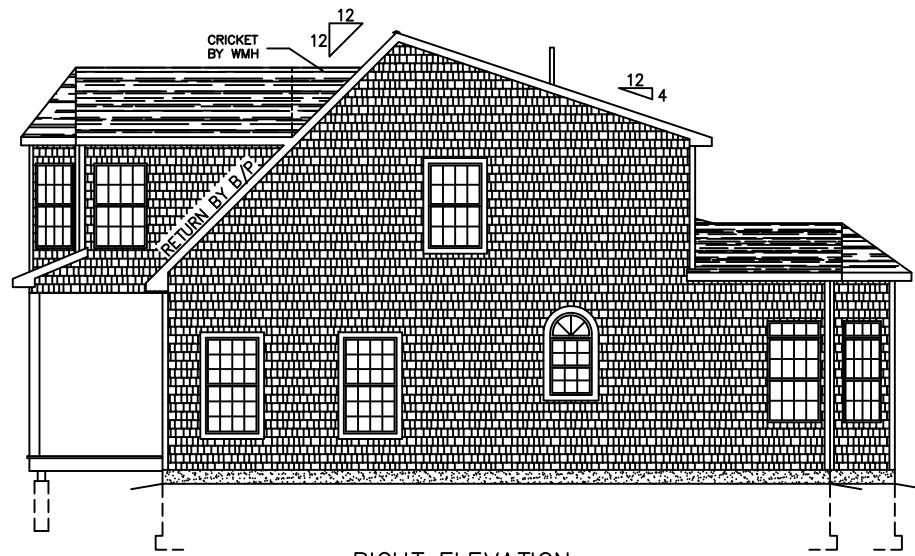


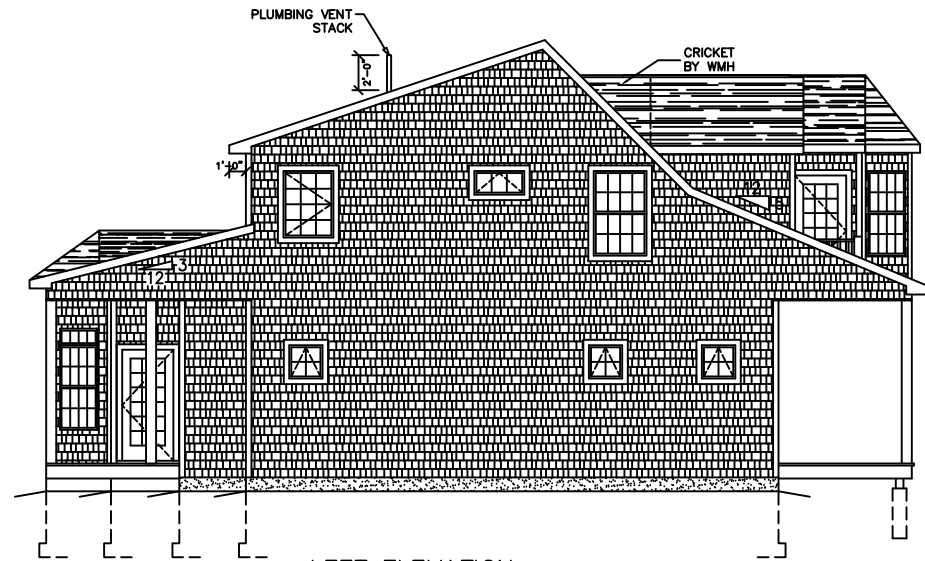


FRONT ELEVATION

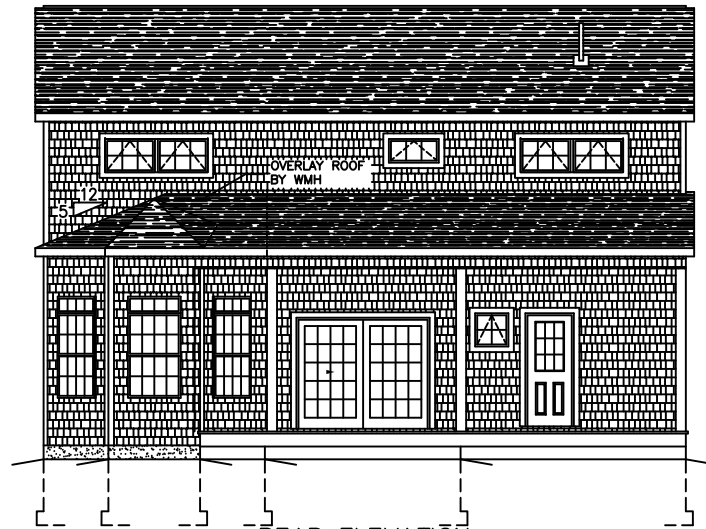
ALL EXT. STAIRS, STEPS, RAILS & GUARDS TO BE DESIGNED, SUPPLIED AND INSTALLED BY B/P



RIGHT ELEVATION



LEFT ELEVATION



REAR ELEVATION

SEE STANDARD NOTES & DETAILS DWG #8

USE GROUP: R5
 CONST. TYPE: VB
 DESIGNER: V. GIORGIO
 DATE: 09/13/11
 SCALE: 1/8" = 1'-0"
 PAGE: 1 A

BUILDER: HOMEOWNER:

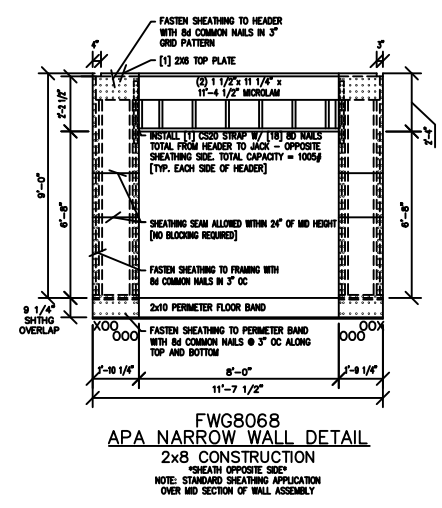
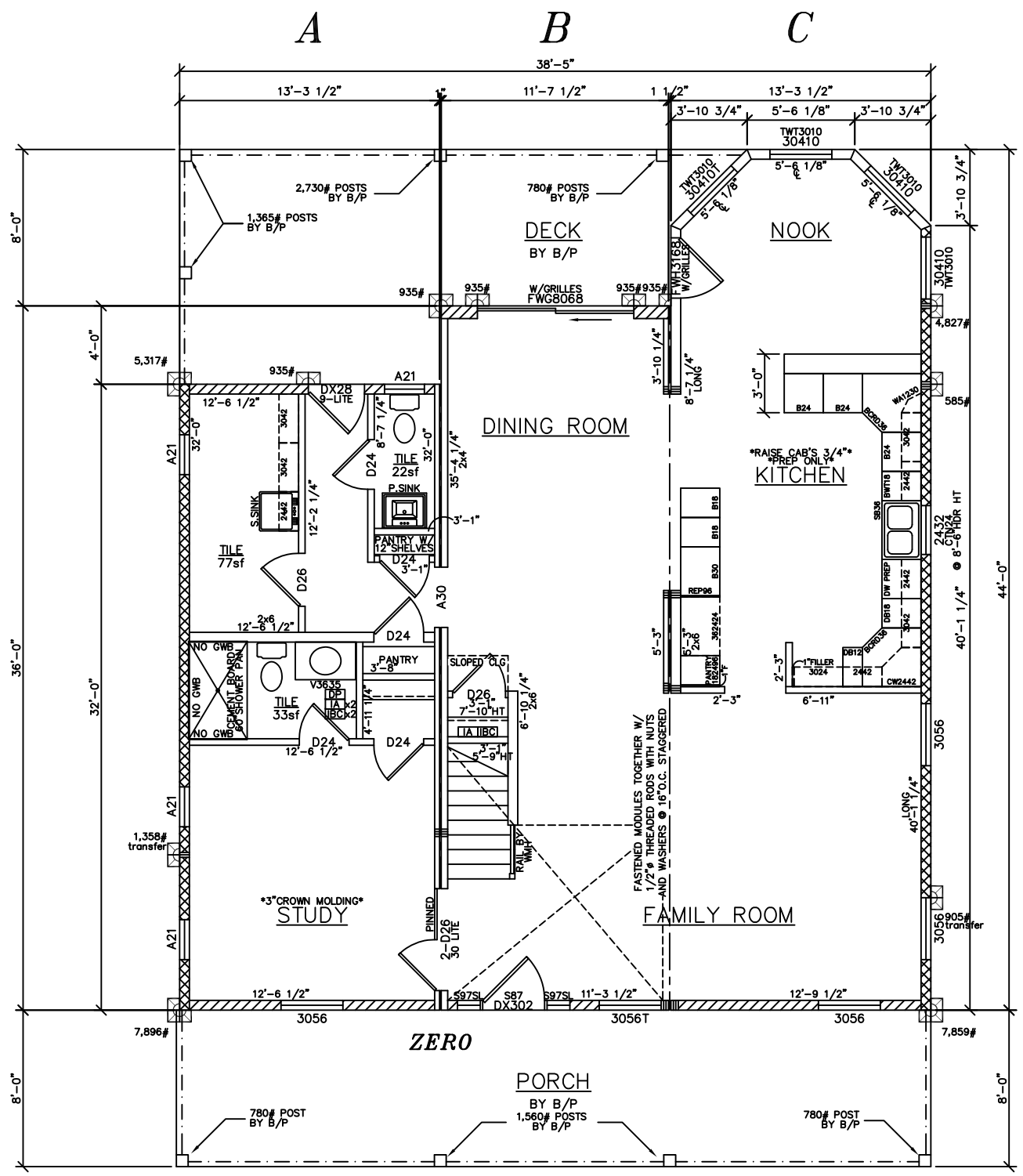
**'6' BOX CAPE CTM-R
 ELEVATIONS**

Westchester Modular Homes Inc
 30 Reagans Mill Road, Wingdale, New York, 12594
 Tel (845)832-9400 Fax (845)832-6698

SERIAL No.	11112
PRODUCTION No.	5874
REVISION	DATE
CHECK	DATE
V. GIORGIO	10/12/07

THIRD PARTY INSPECTION AGENCY

PE / RA



1,421 S.F.
1st. FLR.

9'-0" ENTIRE 1ST FLOOR CEILING HT
ALL WINDOWS TO BE ANDERSEN STORMWATCH
-SOLID SMOOTH 6 PANEL DOORS-
-UPGRADE BASE & WINDSOR CASING-
-R11 INSULATION ON ALL INTERIOR WALLS EXCEPT FACE WALLS OF CLOSETS-

* DESIGNED TO THE FOLLOWING:
-2009 INTERNATIONAL RESIDENTIAL CODE, NJ AMENDMENTS
-2009 NAPHCC NATIONAL STANDARD PLUMBING CODE, NJ AMENDMENTS
-2008 NATIONAL ELECTRICAL CODE, NJ AMENDMENTS
-2009 INTERNATIONAL ENERGY CONSERVATION CODE, NJ AMENDMENTS

NOTE:
ALL WINDOWS WITH A SILL HEIGHT LESS THAN 24" ABOVE FINISHED FLOOR AND WITH A EXT. HEIGHT OF GREATER THAN 6'-0" TO GRADE SHALL BE EQUIPPED WITH FALL PROTECTION SUPPLIED AND INSTALLED BY B/P ON SITE IN ACCORDANCE W/ R612.3

115 MPH WIND ZONE

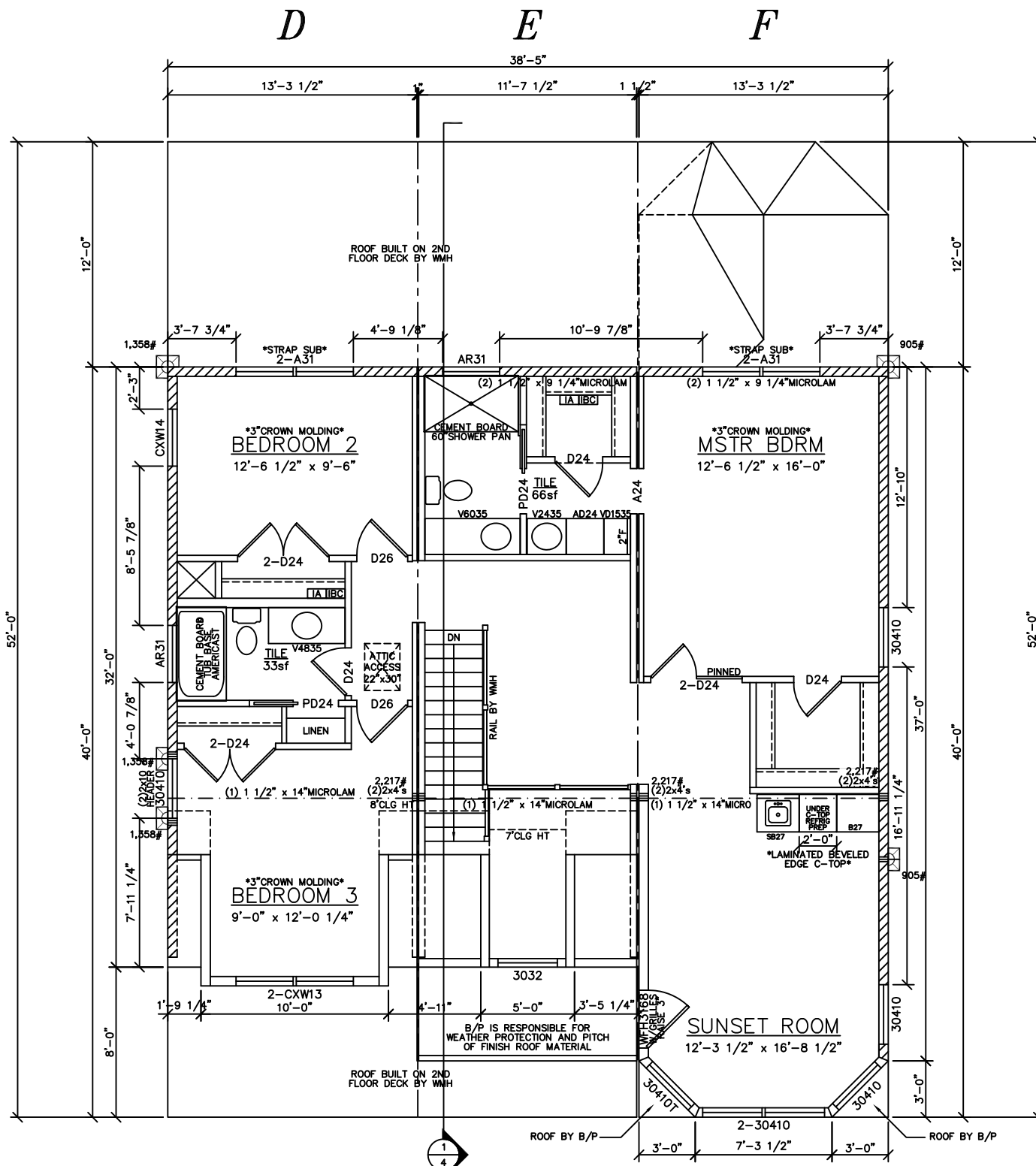
SHEARWALL LEGEND	
ALL FIELD NAILING IS 12" OC SEE BELOW FOR EDGE NAILING	
	SHEAR WALL (436#/LF) w/ 8d COMMON NAILS @ 6" OC
	SHEAR WALL (590#/LF) w/ 8d COMMON NAILS @ 4" OC
	SHEAR WALL (730#/LF) w/ 8d COMMON NAILS @ 3" OC
	HOLDDOWN LOCATION AND REQUIRED LOAD
LOAD #	

ALL WINDOWS & DOORS
NEW JERSEY FLASHING

FLOOR PLAN NOTES:
1) WINDOWS SHALL BE PROTECTED FROM WIND BORNE DEBRIS AS FOLLOWS:
IN ACCORDANCE WITH THE INTERNATIONAL RESIDENTIAL CODE SECTION R301.2.1.2 EXCEPTION, THE BUILDER/ PURCHASER SHALL BE RESPONSIBLE FOR PROVIDING THE REQUIRED EXTERIOR PROTECTION, INCLUDING THE FASTENING.
2) WINDOW AND EXTERIOR DOOR DESIGN PERFORMANCE RATING SHALL CONFORM TO IRC SECTION R301.2.1
3) SHEARWALLS AND HOLDDOWNS ARE NOTED ON THE FLOOR PLAN AS REFERENCED BY THE SHEARWALL SCHEDULE. THE BUILDER/ PURCHASER IS RESPONSIBLE FOR PROVIDING AND INSTALLING ALL HOLDDOWNS AS REQUIRED BY THE SHEAR WALL SYSTEM DESIGN (8 1/2" x 11") SHEETS
4) SEE THE FASTENING SCHEDULE ON SHEET 4C (A STAPLE EQUIVALENT IS INCLUDED FOR THE SHEATHING FASTENING)
5) SEE THE UPLIFT STRAPPING REQUIREMENTS ON SHEET 4C
6) CORNER POSTS INCLUDE (3) STUDS MINIMUM

SEE STANDARD NOTES & DETAILS DWG #8

USE GROUP: R5	BUILDER: WESTCHESTER MODULAR HOMES INC	SERIAL No. 11112	THIRD PARTY INSPECTION AGENCY
CONST. TYPE: VB		PRODUCTION No. 5874	PE / RA
DESIGNER: V. GIORGIO		REVISION	
DATE: 09/13/11		DATE	
SCALE: 3/16" = 1'-0"		CHECK	
PAGE:		DATE	
		'6' BOX CAPE CTM-R	
		Westchester Modular Homes Inc 30 Reagans Mill Road, Wingdale, New York, 12594 Tel (845)832-9400 Fax (845)832-6698	



1,352 S.F.
2nd. FLR.

ALL WINDOWS TO BE ANDERSEN STORMWATCH

-SOLID SMOOTH 6 PANEL DOORS-
-UPGRADE BASE & WINDSOR CASING-
-R11 INSULATION ON ALL INTERIOR WALLS
EXCEPT FACE WALLS OF CLOSETS-

115 MPH WIND ZONE

SHEARWALL LEGEND	
ALL FIELD NAILING IS 12" OC SEE BELOW FOR EDGE NAILING	
	SHEAR WALL (436#/LF) w/ 8d COMMON NAILS @ 6" OC
	SHEAR WALL (590#/LF) w/ 8d COMMON NAILS @ 4" OC
	SHEAR WALL (730#/LF) w/ 8d COMMON NAILS @ 3" OC
	HOLDDOWN LOCATION AND REQUIRED LOAD
LOAD #	

NOTE:
ALL WINDOWS WITH A SILL HEIGHT LESS THAN 24"
ABOVE FINISHED FLOOR AND WITH A EXT. HEIGHT OF
GREATER THAN 6'-0" TO GRADE SHALL BE EQUIPPED
WITH FALL PROTECTION SUPPLIED AND INSTALLED BY
B/P ON SITE IN ACCORDANCE W/ R612.3

* DESIGNED TO THE FOLLOWING:
-2009 INTERNATIONAL RESIDENTIAL CODE, NJ AMENDMENTS
-2009 NAPHCC NATIONAL STANDARD PLUMBING CODE, NJ AMENDMENTS
-2008 NATIONAL ELECTRICAL CODE, NJ AMENDMENTS
-2009 INTERNATIONAL ENERGY CONSERVATION CODE, NJ AMENDMENTS

LIGHT & VENTILATION SCHEDULE (SF)			
ROOM	AREA	LIGHT SUPPLIED	VENT SUPPLIED
MSTR BDRM	201	19.8	8.80
BEDROOM 2	121	18.1	11.60
BEDROOM 3	108	24.8	19.20
SUNSET ROOM	206	66.9	47.11

ALL WINDOWS & DOORS
NEW JERSEY FLASHING

SEE STANDARD NOTES & DETAILS DWG #8

THIRD PARTY INSPECTION AGENCY	PE / RA	SERIAL No. 11112	PRODUCTION No. 5874	REVISION	DATE	CHECK	DATE
HOMEOWNER:	BUILDER:	'6' BOX CAPE CTM-R SECOND FLOOR PLAN		Westchester Modular Homes Inc 30 Reagans Mill Road, Wingdale, New York, 12594 Tel (845)832-9400 Fax (845)832-6698			
USE GROUP:	R5	DESIGNER:	V. GIORGIO	DATE:	09/13/11	SCALE:	3/16" = 1'-0"
CONST. TYPE:	VB	PAGE:	3B				