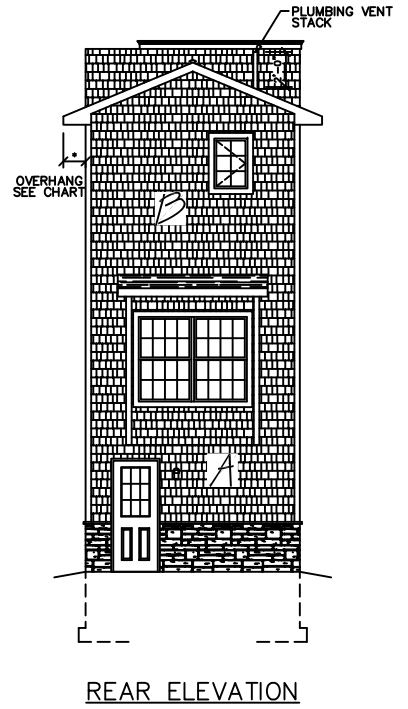
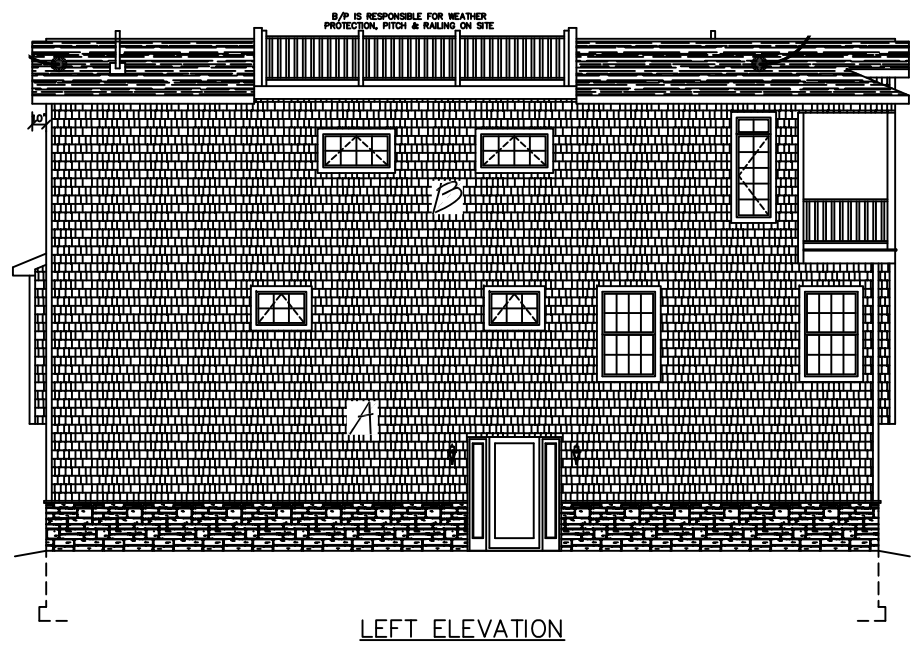
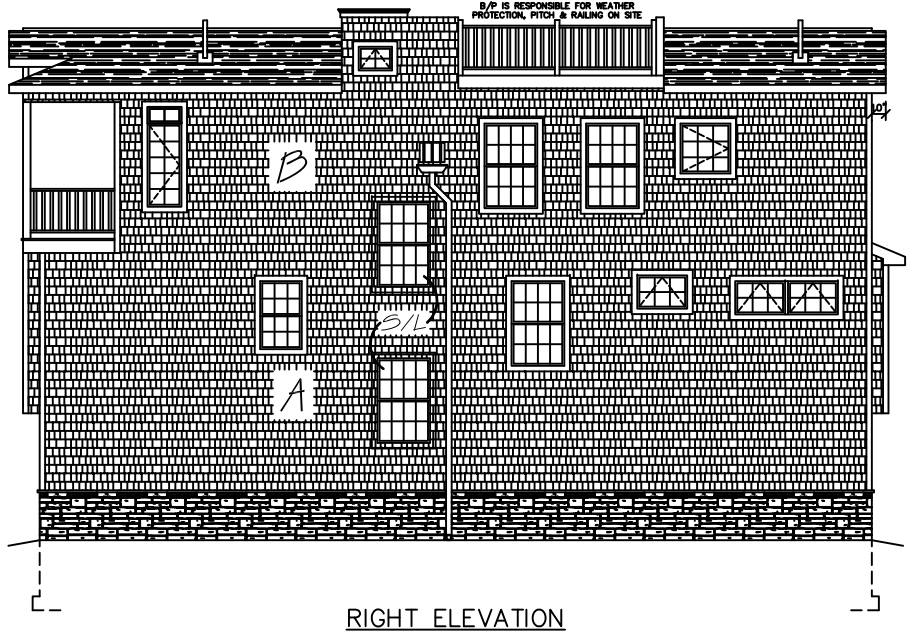
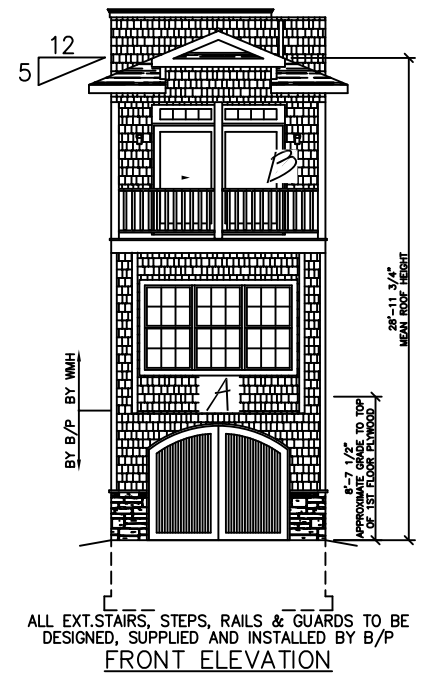


OVERHANG DIMENSION (*)			
ROOF PITCH	HOUSE WIDTH		
	24'-0"	26'-0"/30'-0"	27'-8"/31'-8"
5/12	16"	11"	16"
7/12	16"	11"	16"
9/12	12"	11"	12"
12/12	8 3/4"	8 3/4"	8 3/4"

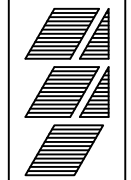


SEE STANDARD NOTES & DETAILS DWG #8

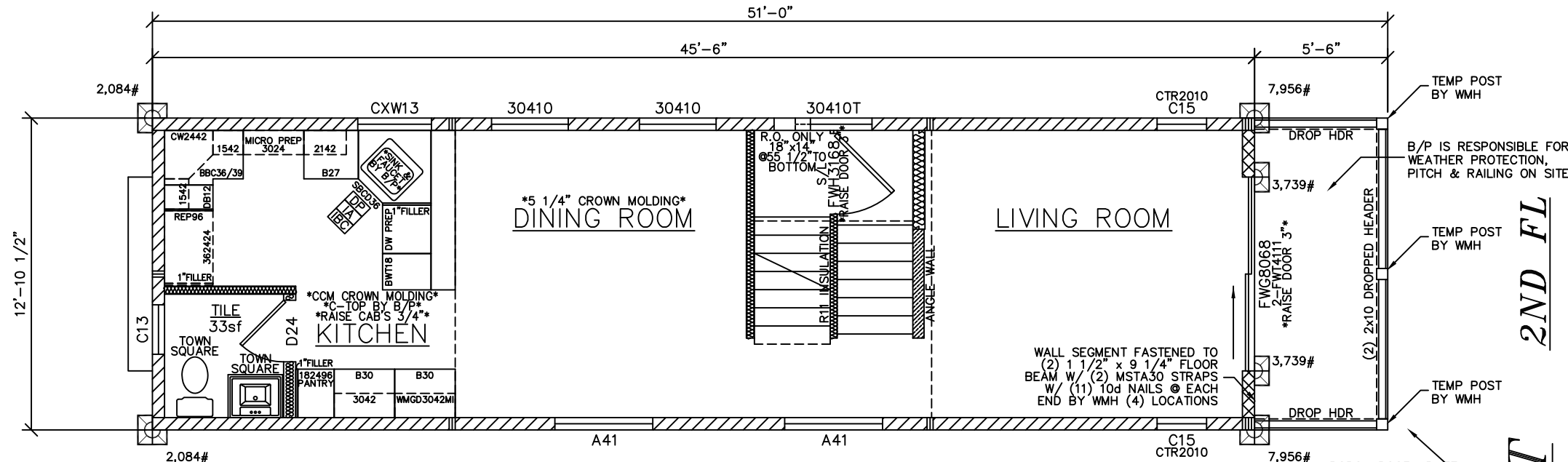
USE GROUP:	R5	BUILDER:	HOMEOWNER:	THIRD PARTY INSPECTION AGENCY:
CONST. TYPE:	VA	SERIAL No.	11051	PE / RA
DESIGNER:	V. GIORGIO	PRODUCTION No.	5840	
DATE:	05/10/11	REVISION		
SCALE:	1/8" = 1'-0"	DATE	06/13/11	
PAGE:	1	DATE	08/25/11	
		CHECK		
		V. GIORGIO		10/12/07

**COLONIAL CTM-
ELEVATIONS**

Westchester Modular Homes Inc
30 Reagans Mill Road, Wingdale, New York, 12594
Tel (845)832-9400 Fax (845)832-6698



B

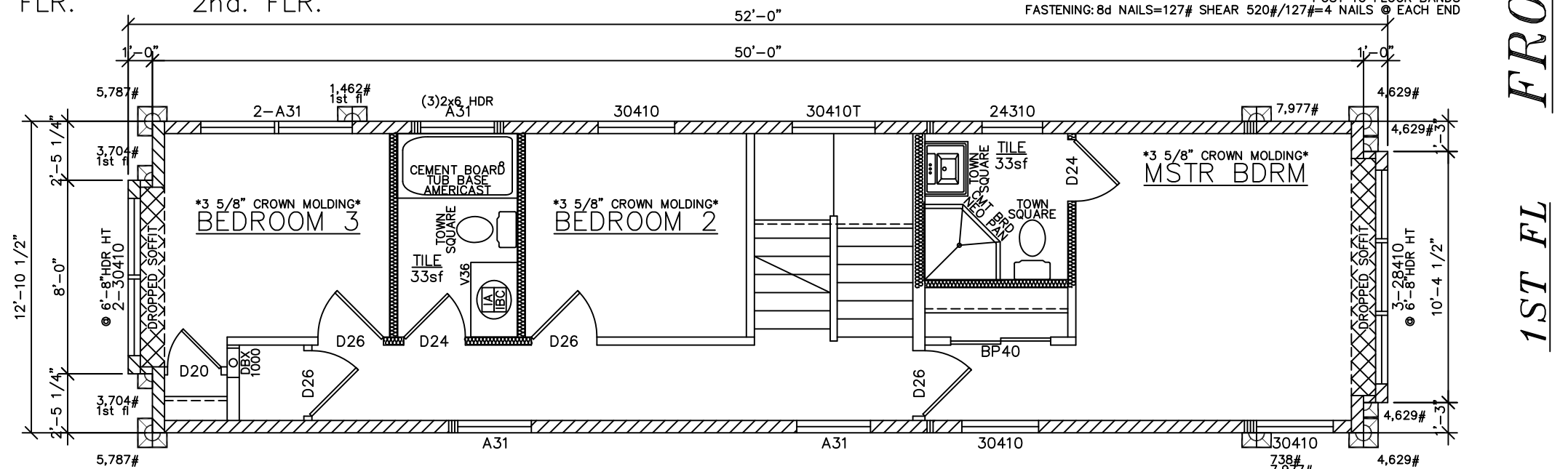


662 S.F. 586 S.F.
1st. FLR. 2nd. FLR.

9'-0" ENTIRE 2ND FLOOR CEILING HT.

USE 1 1/4" x 20ga GALVANIZED STEEL STRAP FROM POST TO ROOF & POST TO FLOOR BANDS FASTENING: 8d NAILS=127# SHEAR 520#/127#=4 NAILS @ EACH END

A



8'-0" ENTIRE 1ST FLOOR CEILING HT.

ALL STORMWATCH WINDOWS TO HAVE A DP50 RATING

- * DESIGNED TO THE FOLLOWING:
- 2009 INTERNATIONAL RESIDENTIAL CODE, NJ AMENDMENTS
- 2008 NAPCC NATIONAL STANDARD PLUMBING CODE, NJ AMENDMENTS
- 2008 NATIONAL ELECTRICAL CODE, NJ AMENDMENTS
- 2009 INTERNATIONAL ENERGY CONSERVATION CODE, NJ AMENDMENTS

NOTE:
ALL WINDOWS WITH A SILL HEIGHT LESS THAN 24" ABOVE FINISHED FLOOR AND WITH A EXT. HEIGHT OF GREATER THAN 6'-0" TO GRADE SHALL BE EQUIPPED WITH FALL PROTECTION SUPPLIED AND INSTALLED BY B/P ON SITE IN ACCORDANCE W/ R612.3

115MPH WIND ZONE SHEARWALL LEGEND
ALL FIELD NAILING IS 12" OC SEE BELOW FOR EDGE NAILING 5/8" GYP BD FASTENED WITH 6d CEMENT COATED 1-7/8" LONG NAILS AT 7" O.C. - SEE U356 DETAIL ON DWG 4 ANY NAIL HAVING A LENGTH, SHANK DIAMETER AND HEAD DIAMETER EQUAL TO OR GREATER THAN THE DIMENSIONS SPECIFIED IN THE SYSTEM DESCRIPTION AND BE SUBSTITUTED FOR THE COOLER NAIL

	SHEAR WALL (436#/LF) w/ 8d COMMON NAILS @ 6" OC
	SHEAR WALL (590#/LF) w/ 8d COMMON NAILS @ 4" OC
	SHEAR WALL (730#/LF) w/ 8d COMMON NAILS @ 3" OC
	HOLDDOWN LOCATION AND REQUIRED LOAD

- FLOOR PLAN NOTES:**
- WINDOWS SHALL BE PROTECTED FROM WIND BORNE DEBRIS AS FOLLOWS:
IN ACCORDANCE WITH THE INTERNATIONAL RESIDENTIAL CODE SECTION R301.2.1.2 EXCEPTION, THE BUILDER/ PURCHASER SHALL BE RESPONSIBLE FOR PROVIDING THE REQUIRED EXTERIOR PROTECTION, INCLUDING THE FASTENING.
 - WINDOW AND EXTERIOR DOOR DESIGN PERFORMANCE RATING SHALL CONFORM TO IRC SECTION R301.2.1
 - SHEARWALLS AND HOLDDOWNS ARE NOTED ON THE FLOOR PLAN AS REFERENCED BY THE SHEARWALL SCHEDULE. THE BUILDER/ PURCHASER IS RESPONSIBLE FOR PROVIDING AND INSTALLING ALL HOLDDOWNS AS REQUIRED BY THE SHEAR WALL SYSTEM DESIGN (8 1/2" x 11") SHEETS
 - SEE THE FASTENING SCHEDULE ON SHEET 4C (A STAPLE EQUIVALENT IS INCLUDED FOR THE SHEATHING FASTENING)
 - SEE THE UPLIFT STRAPPING REQUIREMENTS ON SHEET 4C
 - CORNER POSTS INCLUDE (3) STUDS MINIMUM

ALL WINDOWS & DOORS NEW JERSEY FLASHING

- ENERGY STAR COMPLIANCE-
- *CAULK UNDER ALL EXTERIOR WALLS*
- *SEAL ALL WIRES PIPES AND VENT PENETRATIONS IN FLOORS, CEILINGS AND EXTERIOR WALLS*
- *FOAM GASKETS TO BE INSTALLED TO ALL EXTERIOR WALL OUTLETS*
- *WALL INSULATION TO BE INSTALLED SPLIT AROUND WIRING AND ELECTRICAL BOXES-NO GAPS*
- *INSTALL MATING WALL GASKET*
- *LOW EXPANSION SPRAY FOAM INSULATION INSTALLED AROUND DOORS AND WINDOWS*
- *DRAFT STOP @ ALL HI-HATS*

SEE STANDARD NOTES & DETAILS DWG #8

USE GROUP: R5	CONST. TYPE: VA	DESIGNER: V. GIORGIO	DATE: 05/10/11	SCALE: 1/4" = 1'-0"	PAGE:	HOMEOWNER:	SERIAL No. 11051	PRODUCTION No. 5840	REVISION	DATE	CHECK	DATE
							PE / RA	THIRD PARTY INSPECTION AGENCY				

COLONIAL CTM-

Westchester Modular Homes Inc
30 Reagans Mill Road, Wingdale, New York, 12594
Tel (845)832-9400 Fax (845)832-6698

